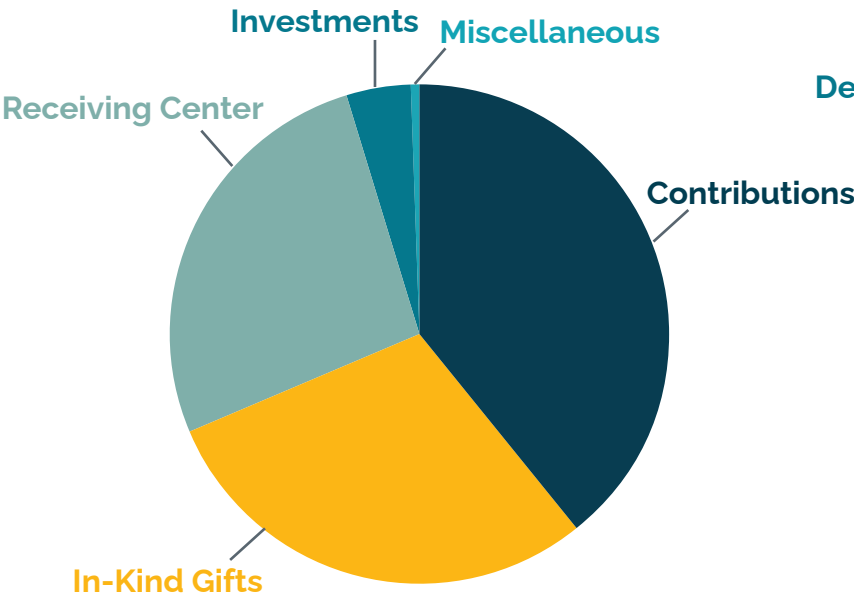


FINANCIAL SUMMARY

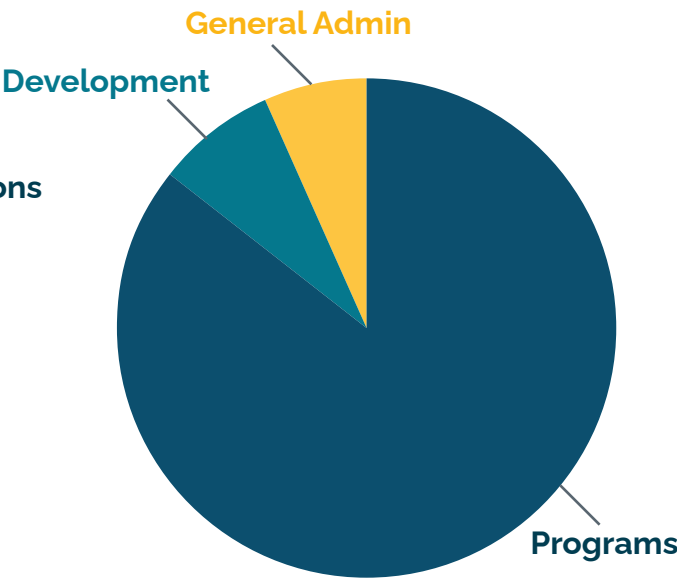
FY2024

2024 Revenue



Contributions	39.2%	\$ 12,819,409
In-Kind Gifts	29.6%	\$ 9,673,574
Receiving Center	26.6%	\$ 8,721,383
Investments	4.2%	\$ 1,381,590
Miscellaneous	0.4%	\$ 137,876
		\$ 32,733,832

2024 Expenses



Programs	85.7%	\$ 29,869,384
Development	7.7%	\$ 2,302,148
General Admin	6.6%	\$ 2,693,394
		\$ 34,864,926

Source: Independent Auditor's Report and Financial Statements